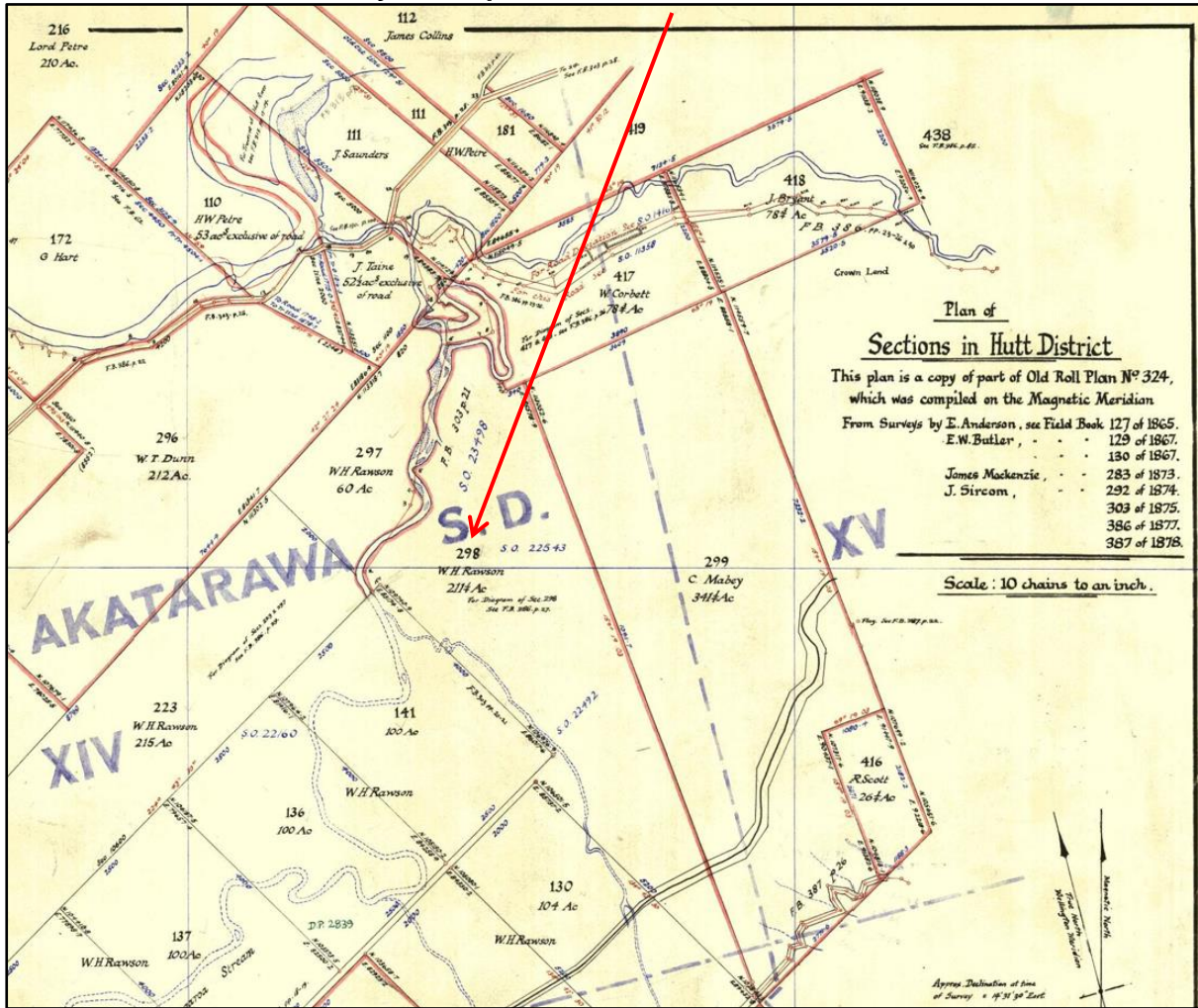


Maymorn School
Old School Road Mangaroa Valley
Opened May 1951- closed 22 December 1967

Maymorn School was recorded as opening for pupils around May 1951. The school was once situated on Railway land and in the street now known as Old School Road. The school closed on 22 December 1967. The school was once situated on part section no 298.

Survey Office plan SO 10985 - Section No 298



(Reference 1860s Section Map SO 10985 Akatarawa Te Marua JGillard WNC_SO_10985_I_5.jpg)

06 November 1950 letter by Education department about providing education facilities for the children living in the Maymorn Railway Camp. At the time 31 children were attending Mangaroa School which was 2½ miles from the camp. Te Marua School was 2.4 miles from camp. It was anticipated that the number of children were expected to increase to 80 in the following year. Mangaroa and/or Te Marua School would not be able to cope with the numbers so extra teachers and additions to one of the schools would have to be made plus providing a bus to transport the children to school. The public works had been conveying the children to Mangaroa School free of charge but could not continue to provide this service as the men were required to work on the tunnel.

(Reference Archives NZ Wellington Primary Schools Wellington Maymorn Department of Education Central Regional Office Residual Management Unit 1950-1967 agency ABFI accession W3540 box 130 record 7/6 part 1)

Before Maymorn School opened the children attended Mangaroa School which was 2½ miles from the Ministry of Works settlement. Additional cottages were being built and the number of school children in the settlement was expected to grow so the Ministry made a request to the Education Board for a temporary school to be established.

The school was built for the children of those employed by the Ministry of Works and (later) the New Zealand Railways while building the Rimutaka Deviation and Tunnel. Temporary Ministry of Works cottages were built for the families who resided in the settlement of Mangaroa which was later renamed Maymorn.

The School was built for the children of the Ministry of Works & New Zealand Railways staff employed in building the Rimutaka Tunnel and who resided in the Railway settlement of Maymorn Upper Hutt. A School reunion was held just before the school closed in December 1967. We believe that the Maymorn School records along with some pupils may have been transferred to Plateau School which opened in 1968. Unfortunately we were unable to locate any admission or withdrawal registers at Plateau School. When Maymorn School closed the nearest school for the former pupils would have been Plateau School or Mangaroa School.

Upper Hutt Leader 25 January 1951

New School for Mangaroa P.W.D. - The Education Department favours the establishment of a school at the Ministry of Works Camp at Mangaroa rather than transporting the children to the present Mangaroa School. The Wellington Education Board are to obtain the price of a two roomed prefabricated building, plus lavatories and submit details to the Department. The Department are of the opinion that if future numbers warrant provision of three rooms at the camp, they favour the removing and re-erecting of the pre-fab building now at Mangaroa School. Mr A E Robinson the district representative has been working hard for such a school and his representations have at last borne fruit. The extra pre-fab rooms at the Upper Hutt School will be ready for the re-opening of the new term next month. Trentham School's, extra rooms will not be available for the time being as the builder is at present held up for Pinex Hard Board. Also progress is held up at the Coltman Estate School through the shortage of cement

(Reference Upper Hutt Upper Hutt Leader 25 January 1951 Volume XIII Number 4)

1951-1961 (01 to 10 years)

Upper Hutt Leader 24 May 1951

School at Mangaroa P.W.D. – The two-roomed school promised to the workers at Mangaroa M.W.D. Camp which is of a prefab design is practically completed and it is hoped that it will soon be in use for the children in that area.

(Reference Upper Hutt City Library Heritage collection UH Leader 24 May 1951 Volume XIII Number 21)

Maymorn school was opened 1951 after the May school term. The School consisted of two prefabricated classroom with an outside toilet block situated on Old School Road in Maymorn. Old School Road was the same road that leads to the Whiteman's farm house in the 1950s.

1951 Classification list Class Schedules – head teacher Barnes Maymorn School – 29 children

(Reference Archives New Zealand Wellington ABDM W3569 box 595 Classification list Class Schedules 1951 Maymorn School)

Upper Hutt Leader newspaper 28 March 1952

Maymorn School Grand Dance Mangaroa Camp Y.M.C.A. Saturday 05 April 1952

First Class Supper Lots of Fun Admission 3/-

(Reference Papers past website Upper Hutt Leader newspaper 28 March 1952 Volume IX Number 12)

Upper Hutt Leader 19 June 1952

Upper Hutt School Committees Assn. –Annual Report

At Maymorn Tunnel a new school has been established and is progressing well.

(Reference Upper Hutt City Library Heritage collection UH Leader 19 June 1952 Volume IX Number 24)

Frederick Granville (Freddie) Barnes was the head teacher at Maymorn School in 1952

Upper Hutt Leader 03 July 1952

Freddie Barnes who will play the part of Professor has a very fine war record in the British Navy and is at present teaching school at Maymorn (Mangaroa Camp). His excellent speaking voice has often been heard from Station 2YC and shortwave Radio New Zealand where he acted as announcer for nearly two years.

(Reference Upper Hutt City Library Heritage collection UH Leader 03 July 1952 Volume IX Number 26)

Upper Hutt Leader 07 August 1952

Mr F G Barnes - Mr Fred Barnes is a resident of Moonshine Road and is at present head teacher at the Maymorn School. During the last war he served in the Navy with the rank of Lieutenant. Prior to entering the teaching profession Mr Barnes was engaged in the Insurance business. He is well known for his keen interest in the local Repertory Society and has taken leading roles in a number of the Society's productions. Mr Barnes was recently elected Assistant-Secretary of the Upper Hutt Branch of the N.Z. Labour Party and is a delegate to the new Heretaunga L.R.C. His keen analytical approach to current problems should benefit the Trust if he is elected.

(Reference Upper Hutt City Library Heritage collection UH Leader 07 August 1952 Volume IX Number 31)

Upper Hutt Leader newspaper 06 November 1952

Children's Sports Inter-School Baseball – The weather which had been under suspect all the morning kept fine when the combined Mangaroa and Maymorn School senior pupils played softball against Trentham School last Friday afternoon.

(Reference Upper Hutt City Library Heritage collection UH Leader newspaper 06 November 1952 Volume IX Number 44)

Upper Hutt Leader 27 November 1952

That it was pleasing to see the first production of the Maymorn School Magazine and although it could be greatly improved upon.'

(Reference Upper Hutt City Library Heritage collection UH Leader 27 November 1952 Volume IX Number 47)

Upper Hutt Leader 27 November 1952

School Newspaper - Under the guidance of Mr F G Barnes head teacher at the Maymorn School the pupils have produced the first issue of what they hope will be a monthly newspaper. It is a two page cyclostyled publication and in addition to school news it contains information concerning the activities at the Mangaroa tunnel camp. The front page is devoted to advertising and is in three colours. The children are to be commended for their fine effort.

(Reference Upper Hutt City Library Heritage collection UH Leader 27 November 1952 Volume IX Number 47)

Mr Frederick Granville Barnes was the head teacher in 1952

1952 December 18 Classification list Class Schedules – head teacher Barnes Maymorn School – 44 children

(Reference Archives New Zealand Wellington ABDM W3569 box 595 Classification list Class Schedules 1952 Maymorn School)

Mr Desmond Frederick Allnut Hillary was the head teacher in 1953

1953 December 17-21 Classification list Class Schedules – head teacher D F A Hillary Maymorn School – 60 children

(Reference Archives New Zealand Wellington ABDM W3569 box 596 Classification list Class Schedules 1953 Maymorn School)

Maymorn School in background 1953



(Reference private collection UH Railways 1953 Maymorn 30-3-1953 (1) NZ Researcher.jpg)

R.N.Z. Bus Service to Maymorn 1953



(Reference private collection UH Railways 1953 Maymorn 30-3-1953 (2) NZ Researcher.jpg)

1954 December 16-20 Classification list Class Schedules – head teacher D F A Hillary Maymorn School – 56 children

(Reference Archives New Zealand Wellington ABDM W3569 box 596 Classification list Class Schedules 1954 Maymorn School)

Upper Hutt Leader 12 May 1955

School Committees for next two years – Maymorn – Messrs Stephen (Chairman), Lessels (Secretary), Quinnell, Mrs Campbell, Mrs Gallagher.

(Reference Upper Hutt City Library Heritage collection UH Leader 12 May 1955 Volume XII Number 17)

1954 Heretaunga Electoral Roll (School Committee)

- Frederick Charles Stephen 13 McLaren Street Mangaroa builder
- Louise Caroline Stephen 13 McLaren Street Mangaroa married
- Elizabeth Olive Campbell Mangaroa Camp Mangaroa labourer
- Robert Bailey Campbell Mangaroa Camp Mangaroa tunneller
- Muriel Mavis Gallagher Mangaroa Camp Upper Hutt married
- John Manus Gallagher Mangaroa Camp Upper Hutt tunneller

Although James Bertie Lessels was residing in Maymorn Camp he was still recorded on the 1954 Otaki Electoral Roll residing at his former address McLeavey Road Ohau.

Charles Alfred Quinnell (1910-1979) N.Z.R. Eltham railway employee & Mary Quinnell (1919-1988) 734 Railway Settlement Eltham married appeared on the 1960 Egmont Electoral Roll

(Reference Ancestry website New Zealand Electoral Rolls)

1955 December 16-20 Classification list Class Schedules – head teacher [W M Clough sic very hard to read] Maymorn School -39 children

(Reference Archives New Zealand Wellington ABDM W3569 box 596 Classification list Class Schedules 1955 Maymorn School)

William Martin Clough was the head teacher in 1955

The last train over the Rimutaka Incline was on 29 October 1955. All the Maymorn School children were passengers on the last train trip over the Rimutaka Incline.

On 03 November 1955 the Rimutaka Tunnel was officially opened.

Maymorn School pupils performing on stage at Mayfair Theatre 1955 -1956



(Reference Private collection DJLS 0105 to LSChart2-3-3 1956 Mangaroa School concert)

Left to Right girl middle – Jeanette Lessels front – boy back – Maurice Lessels front – girl back– boy front – little girl front – Gail Knox behind microphone middle – half head girl back – boy front – boy middle – girl back – girl front – girl middle – girl back - Lynly Lessels (front) – boy middle – boy end.

When the Rimutaka Tunnel was completed the Maymorn School put on a concert in the Y.M.C.A. Hall once situated in Parks Line Road Maymorn end of Mangaroa Valley Upper Hutt. It would have been at the end of 1955. The concert was so successful that the pupils performed the concert again at the Mayfair Theatre on Main Street in Upper Hutt. I believe it would have been at the beginning of 1956. The Mayfair Theatre is now part of the Mayfair Coffee Lounge.

Dovey Katene-Horvath taught the kapa haka group. Aunty Dovey as she was known was later associated with the Mawai-Hakona Maori cultural group and Orongomai marae.

Upper Hutt Leader 26 April 1957

Further School Committees – Maymorn – Mr F Stephen (chairman), Mr D A Leech (secretary-treasurer), Messrs J B Lessels, H H Dyason, H J Ashworth.

(Reference Upper Hutt City Library Heritage collection Upper Hutt Leader 26 April 1957 Volume XIV Number 15)

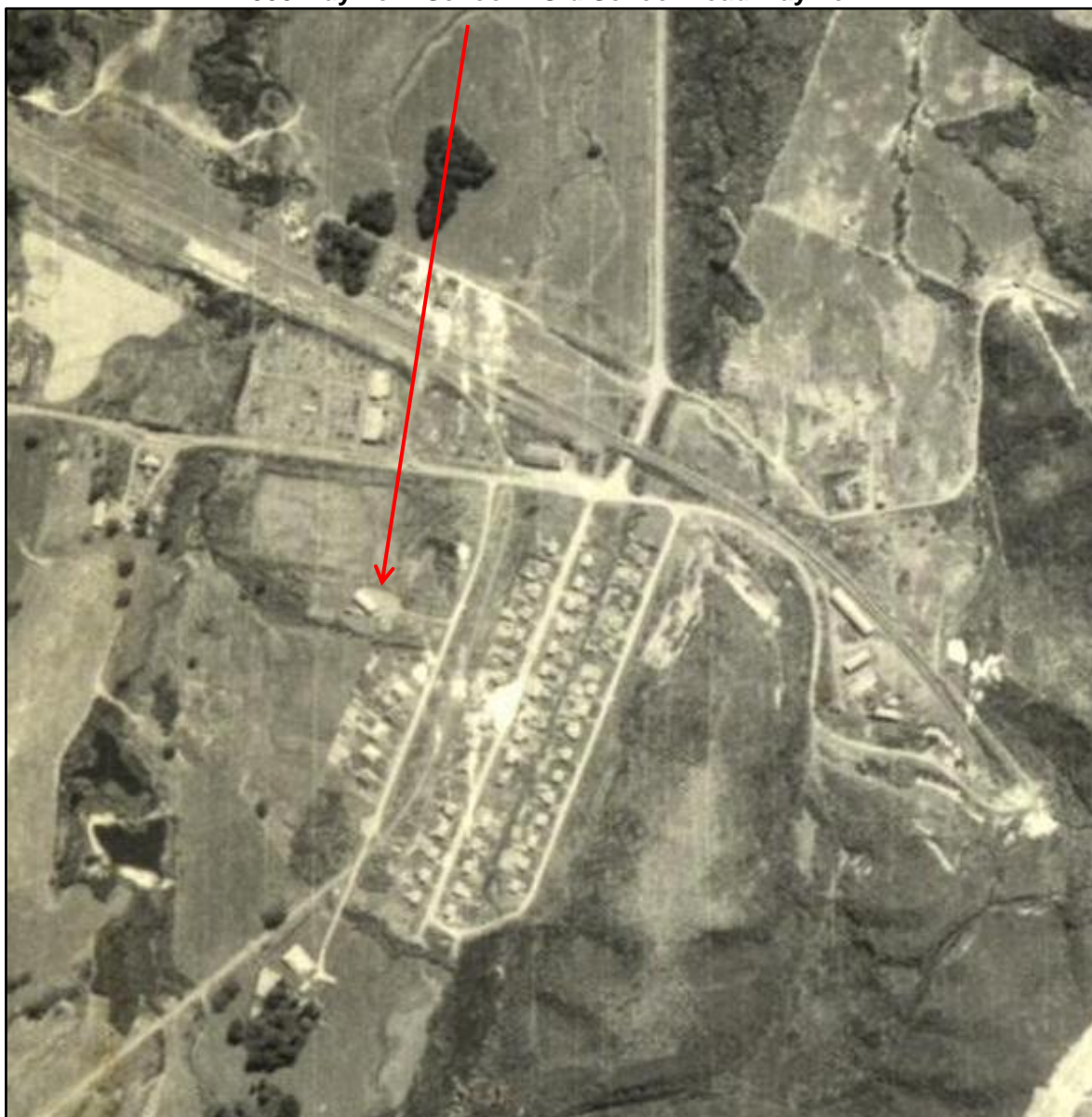
1957 Heretaunga Electoral Roll (School Committee)

- Frederick Charles Stephen 13 McLaren Street Mangaroa storeman
- Louise Caroline Stephen 13 McLaren Street Mangaroa married
- Leonard Anthony Lionel Leech 624 Mangaroa Camp electrical
- Margery Frances Leech 624 Mangaroa Camp married
- James Bertie Lessels N.Z.R. Mangaroa painter
- Doris Lessels N.Z.R. Mangaroa married
- Harold Horace Dyason Rail House B617 Mangaroa ganger
- Georgina Mary Violet Dyason Rail House B617 Mangaroa married
- Harry John Ashworth N.Z.R. Camp Mangaroa driver
- May Louise Ashworth N.Z.R. Camp married

(Reference Ancestry website New Zealand Electoral Rolls)

Mr Harold Walter Cloughton was the head teacher in 1957

1958 Maymorn School – Old School Road Maymorn



(Reference Upper Hutt City Library Heritage collection recollect website P6-1766f (1).jpg)

Upper Hutt Leader 27 August 1959

Come to the Maymorn School PTA Dance in the Y.M.C.A. Hall Mangaroa - Saturday 12th September at 8 pm - Bill Tangahau's Coasties Good Floor – Grand Supper – 8 Piece Band - A free bus leaving Silverstream at 8 pm will stop at all intermediate stops - Admission Double 6/- Single 4/-

(Reference Upper Hutt City Library Heritage collection Upper Hutt Leader 27 August 1959 Volume XVI Number 33)

Mr Kenneth Ashley Milne was the head teacher in 1960

Upper Hutt Leader 30 July 1964

Tanganyikan Teacher at U.H. School – More than 200 senior pupils of Upper Hutt School listened with great interest to a vivid talk illustrated by a film given last Friday by a Tanganyikan school teacher Mr Petro Mitande who is in New Zealand and is at present on the staff of the Maymorn School

(Reference Upper Hutt City Library Heritage collection Upper Hutt Leader 30 July 1964 Volume XXI Number 28)

1961-1967 (10 to 16 years)

22 November 1963

There are 64 children at Maymorn School and this number will almost certainly increase approximately 90 during 1964. This school is only a double unit prefab on Railway land and was only intended as a temporary school during the course of the construction of the tunnel. The school has however remained and is increasing rather than dropping away. Something in the nature of a permanent school must be faced up to this year. It had been hoped that with the 48 children from the Plateau are at present in attendance at Te Marua School, a new four classroom school on the site at the Plateau for which negotiations are under way would be the most satisfactory answer. There are complications in trying to effect consolidation between Mangaroa and Maymorn and/or between Maymorn and the Plateau. A meeting of parents is being arranged to discuss the whole proposal and it is hoped that a solution can be found. A new development has occurred at the time of writing which is the offer of some further Army land at Mangaroa Camp and this could offer a solution. It is considered essential to reach early settlement of the Maymorn problem and the new school is intended to be proceeded with as quickly as agreement can be reached between interested parties as to the location for the school
(Reference Archives NZ Wellington Office R20132448 date 1963-1968 Primary Schools Wellington Plateau box 145 record number 7/6 date 1963-1968 Department of Education Central Regional Office Residual Management Unit ABFI W3540 28681)

Maymorn School 1965



(Reference Upper Hutt City Library Heritage collection Maymorn School P1-2767-5157.jpg)

Maymorn School group awaiting railcar for Castlepoint holiday - Maymorn school children had been joined at Castlepoint and Clareville School near Carterton for a week's camping holiday.
(Reference Upper Hutt Leader newspaper 01 December 1965)

A School celebration and reunion was held just before the school closed in December 1967. I thought the Maymorn School records may have been transferred to Plateau School which opened early in 1968 and would have been the nearest school for former pupils of Maymorn School. Enquiries were made at the Plateau School but I was told that they did not have any Maymorn School records.

In the Education Board records I located a letter from the Plateau School headmaster requesting permission from the board to destroy a list of equipment that he considered useless. On the list was noted Attendance and Admission registers. I now have to locate the Plateau School Education Board records to see if permission was granted and to see if these records were destroyed.

Maymorn School break-up concert December 1965



(Reference Upper Hutt City Library Heritage collection 1967 Maymorn School P1-1473-3863.jpg)

Maymorn School break-up concert December 1965



(Reference Upper Hutt City Library Heritage collection Maymorn School P1-1462-3852.jpg)

L to R back - female unknown – Rose Campbell – rest unknown
L to R front – male unknown – Gail Knox (Mrs Bryan Regan) – female unknown – female unknown – Mr Tyacke or Ashworth

Maymorn School break-up December 1967



(Reference Upper Hutt City Library Heritage collection 1967 Maymorn School P1-1472-3862.jpg)

L to R front –lady – man – man

L to R next row – man – lady – Mr Keith Montague Knox – not sure after that

L to R next row James Bertie / Jim Lessels (glasses) – Jeanette Lessels (glasses) – not sure after that or any of the other people behind them.

Evening Post newspaper 25 May 1968

School Opens Officially – The Plateau primary school at Te Marua was officially opened this morning by the Minister of Education (Mr Kinsells). The new school opened at the beginning of this year with a roll of 154 which has grown to 162. It replaces the Maymorn School which served the families at Maymorn Camp and was closed last year. Most of the children at the new school come from the Maymorn or Te Marua schools. There is a teaching staff of six and a nurse. The head teacher is Mr L R Stafford-Bush. (copy held in set of records at Archives NZ)

(Reference Archives NZ Wellington Office R20132448 date 1963-1968 Primary Schools Wellington Plateau box 145 record number 7/6 date 1963-1968 Department of Education Central Regional Office Residual Management Unit ABFI W3540 28681)

Maymorn School silent school bell 1967



(Reference Upper Hutt City Library Heritage collection recollect website Maymorn School 1967 P1-1470-3860.jpg)

Maymorn School 1967



(Reference Upper Hutt City Library Heritage collection Recollect website Maymorn School 1967 P1-1460-3850.jpg)

Maymorn School 1967



(Reference Upper Hutt City Library Heritage collection Recollect website Maymorn School P1-1459-3849.jpg)

December 1967 Maymorn School



(Reference Upper Hutt City Library Heritage collection recollect website Maymorn School 1967 P1-1471-3861.jpg)

MAYMORN SCHOOL STAFF

Time line *Maymorn School Staff*

1952	Mr Frederick Granville Barnes head teacher 1952-1953
1953	Desmond Frederick Allnutt Hillary head teacher 1953-1955
1955	William Martin Clough head teacher 1955-
0000	Brown
1957	Harold Walter Claughton had teacher 1957-
1960	Kenneth Ashley Milne head teacher 1960
1967	School closed

A – Z

Frederick Granville BARNES head teacher 1952

#Frederick Granville Barnes Moonshine Road Trentham insurance rep & Lelia Mary Barnes Moonshine Road Trentham married 1949 Otaki Electoral Roll

#Freddie Barnes who will play the part of Professor has a very fine war record in the British Navy and is at present teaching school at Maymorn (Mangaroa Camp). His excellent speaking voice has often been heard from Station 2YC and shortwave Radio New Zealand where he acted as announcer for nearly two years reference Upper Hutt City Library Heritage collection UH Leader 03 July 1952 Volume IX Number 26

#Mr F G Barnes - Mr Fred Barnes is a resident of Moonshine Road and is at present head teacher at the Maymorn School. During the last war he served in the Navy with the rank of Lieutenant. Prior to entering the teaching profession Mr Barnes was engaged in the Insurance business. He is well known for his keen interest in the local Repertory Society and has taken leading roles in a number of the Society's productions. Mr Barnes was recently elected Assistant-Secretary of the Upper Hutt Branch of the N.Z. Labour Party and is a delegate to the new Heretaunga L.R.C. His keen analytical approach to current problems should benefit the

Trust if he is elected reference Upper Hutt City Library Heritage collection UH Leader 07 August 1952 Volume IX Number 31

#162976 Barnes Frederick Granville Clerk 15 Clifford Street Karori Wellington NZ WW2 Ballot list & Frederick Granville Barnes Temporary Sub-Lieutenant Military Place New Zealand Service Branch Navy Military date 30 October 1942

#Frederick Granville Barnes married 1945 New Zealand Lelia Mary Bryden (1922-2002) reference RGO NZ marriage registration 1945 folio website 1945/1531

#Frederick Granville Barnes died 1993 New Zealand reference RGO NZ death registration 1993 folio website 1993/31402 born 19 June 1920

Harold Walter (Harry) CLAUGHTON 1957-

#Harold Walter Claughton N.Z.R. Camp Mangaroa school teacher & Oriole Audrey Claughton (25 Sep 1930-2016) N.Z.R. Camp Mangaroa married 1957 Heretaunga Electoral Roll

#Harold Walter Claughton service number 432268 (WW2) Royal Navy Fleet Air Arm Scheme / Royal New Zealand Naval Reserves decorations War Medal 1939-45 Star & New Zealand War Service Medal reference online cenotaph database Auckland War Memorial Museum

#Harold Walter Claughton died 18 June 2016 Whanganui New Zealand reference RGO NZ death registration 2016 folio website 2016/16734 born 02 August 1924

William Martin CLOUGH head teacher 1955

#William Martin Clough 95 Kamahi Road Stokes Valley manager & Beryl Marjorie Clough 95 Kamahi Road Stokes Valley married 1960 Heretaunga Electoral Roll

#William Martin Clough born 1907 England died 1994 England married Beryl Marjory nee Adams born 1922 died 2014 reference Ancestry website

Desmond Frederick Allnutt HILLARY head teacher 1953-1955

#647153 Desmond Frederick Allnutt Hillary student teacher 523 Castle Street NZ WW2 Ballot Lists November 1943

#Desmond F A Hillary 48 Heretaunga Square Heretaunga school teacher & Kathleen M Hillary 48 Heretaunga Square Heretaunga married 1954 Heretaunga Electoral Roll

#Desmond Frederick Allnutt Hillary died 2012 Upper Hutt New Zealand reference RGO NZ death registration 2012 folio website 2012/25865 born 07 September 1925 (Kathleen Margaret Hillary 1919-2007)

Kenneth Ashley MILNE head teacher 1960-

#Kenneth Ashley Milne School House Maymorn teacher & Cherrol Gwen Milne (24 Dec 1928-1972) School House Maymorn married 1960 Heretaunga Electoral Roll

#Kenneth Ashley Milne died 2017 New Zealand reference RGO NZ death registration 2017 folio website 207/7687 born 03 November 1927

Maymorn School Pupils

Time line Maymorn School pupils

1951	roll 29 pupils
1952	roll 44 pupils
1953	roll 60 pupils
1954	roll 56 pupils
1955	roll 39 pupils

1951 Classification list Class Schedules – head teacher Barnes Maymorn School – 29 children
(Reference Archives New Zealand Wellington ABDM W3569 box 595 Classification list Class Schedules 1951 Maymorn School)

1952 December 18 Classification list Class Schedules – head teacher Barnes Maymorn School – 44 children

(Reference Archives New Zealand Wellington ABDM W3569 box 595 Classification list Class Schedules 1952 Maymorn School)

1953 December 17-21 Classification list Class Schedules – head teacher D F A Hillary Maymorn School – 60 children

(Reference Archives New Zealand Wellington ABDM W3569 box 596 Classification list Class Schedules 1953 Maymorn School)

1954 December 16-20 Classification list Class Schedules – head teacher D F A Hillary Maymorn School – 56 children

(Reference Archives New Zealand Wellington ABDM W3569 box 596 Classification list Class Schedules 1954 Maymorn School)

1955 December 16-20 Classification list Class Schedules – head teacher [W M Clough sic very hard to read] Maymorn School -39 children

(Reference Archives New Zealand Wellington ABDM W3569 box 596 Classification list Class Schedules 1955 Maymorn School)

Maymorn School Record Collection and miscellaneous information
--

Upper Hutt City Library Heritage collection

- Archives 4 items
- Audio 5 items
- Manuscript 17 items
- Organisation 1 item
- Person 3 items
- Photos 50 items
- Place 2 items
- Publications 81 items

Archives New Zealand Wellington (6 items under Maymorn School)

- R17423860 date 1948-1967 Maymorn School Mangaroa Camp Box 325 record number 31/1429 former AAQB accession W4073 box 325 record 31/1429 Maymorn School Mangaroa Camp Railway Corporation Ltd Head Office
- R20132310 date 1950-1967 Primary Schools Wellington Maymorn box 130 part number 1 record number 7/6 Department of Education Central Regional Office Residual Management Unit 1950-1967 former ABFI accession W3540
- R21564509 date 1950-1968 Closed School Files Maymorn Accommodation box 432 part number 1 record number 2/415 Wellington Education Board Residual Management Unit former agency ABDM accession W3569
- R84687 date 1951-1954 School Buildings and Sites Education District Wellington and Marlborough Maymorn School [see Mangaroa Camp School] box 1 Former AAQD series 23834 accession W3368 Department of Education Central Regional Office
- R84670 date unknown School Buildings and Sites Education District Wellington and Marlborough Mangaroa Camp School [now Maymorn School] box 1 former AAQD series 23834 accession W3368
- R20450084 date 1963-1967 Schools Wellington Proposed Occupation Centre Maymorn School Site Upper Hutt claim (Wellington Sun Club) box 35 record number 13/1/158/0/2 Ministry of Works and Developments Residual Management Unit Head Office former AATE accession W3399

Archives New Zealand Wellington Office transcripts

Archives New Zealand Wellington Office – 1948-1967

Maymorn School Mangaroa Camp - Ministry of Works file

- Letter dated 20 December 1948 from Education Department to Commissioner of Works regarding a school at Mangaroa Railway settlement
- Letter dated 01 February 1949 from Education Department to Ministry of Works report on progress of married personnel arriving about 1950
- Letter dated 07 September 1950 from Ministry Works to District Engineer regarding the Education Department opening school in 1951
- Letter dated 28 September 1950 from Ministry of Works state 'at present there are sixty children, thirty four being of school age living at Mangaroa being children of the Department employees. Recommend temporary school
- The Ministry provided a site for the Education Department to place a school consisting of a double unit prefabricated building correspondence covers March and April 1951
- Letter 04 February 1952 from Education Department to Ministry Work regarding site for playing field for children at Maymorn School
- Letter dated 04 August 1953 from Mr J Haxton Secretary Mangaroa (Maymorn) School regarding accommodation for new head teacher
- Letter dated 22 November 1967 from Department of Education to Commissioner of Works regarding the closing of Maymorn School
"As the site of this school is controlled by your Department the Wellington Education Board has asked me to advise that this school will be closed at the end of the present school year i.e. 15 December 1967.
The pupils will transfer to the New Plateau School and the prefabricated classroom block at Maymorn will be moved to Taita Intermediate soon after the closing of the school. The toilet block will also be removed as soon as possible.
The Board has asked me to pass on this information and at the same time thank you for the use of the site."

(Reference Archives NZ Wellington Office R17423860 date 1948-1967 Maymorn School Mangaroa Camp Box 325 record number 31/1429 former AAQB accession W4073 box 325 record 31/1429 Maymorn School Mangaroa Camp Railway Corporation Ltd Head Office)

Archives New Zealand Wellington Office – 1948-1967

- Maymorn School Mangaroa Camp Railway Corporation Ltd Head Office 1948-1967 agency AAQB accession W4073 box 325 record 31/1429
- School Building and Sites Education District Wellington and Marlborough Mangaroa Camp School [now Maymorn School] – Department of Education Central Regional Office no date agency AAQD series 23834 accession W3368 box 1
- School Building and Sites Education District Wellington and Marlborough Maymorn School [see Mangaroa Camp School] – Department of Education Central Regional Office 1951-1954 agency AAQD series 23834 accession W3368 box 1
- School Wellington Proposed Occupation Centre Maymorn School site Upper Hutt Claim (Wellington Sun Club) Ministry of Works and Developments Residual Management Unit Head Office 1963-1967 agency AATE accession W3399 box 35 record 13/1/158/0/2
- Closed School files – Maymorn Accommodation Wellington Education Board Residual Management Unit 1950-1968 agency ABDM accession W3569 box 432 record 2/415 part 1
- Primary Schools Wellington Maymorn Department of Education Central Regional Office Residual Management Unit 1950-1967 agency ABFI accession W3540 box 130 record 7/6 part 1

(Reference Archives NZ Wellington Office R17423860 date 1948-1967 Maymorn School Mangaroa Camp Box 325 record number 31/1429 former AAQB accession W4073 box 325 record 31/1429 Maymorn School Mangaroa Camp Railway Corporation Ltd Head Office)

Archives New Zealand Wellington Office 1950-1967

Department of Education Buildings & Sites Wellington Maymorn opened 06 December 1950 closed 22 December 1967. The file compiles of various correspondence regarding the Maymorn school buildings and site but no details regarding the teachers or pupils

- Letter 06 November 1950 by Education department about providing education facilities for the children living in the Maymorn Railway Camp. At the time 31 children were attending Mangaroa School which was 2½ miles from the camp. Te Marua School was 2.4 miles from camp. It was anticipated that the number of children were expected to increase to 80 in the following year. Mangaroa and/or Te Marua School would not be able to cope with the numbers so extra teachers and additions to one of the schools would have to be made plus providing a bus to transport the children to school. The public works had been conveying the children to Mangaroa School free of charge but could not continue to provide this service as the men were required to work on the tunnel.
- There are numerous other notes (no dates) regarding costs of buildings, teachers salary and transport of the children and discussions for and against a new school. Eventually around December 1950 provision for a temporary school was made for the Maymorn children.
- Letter dates 15 February 1951 displays the cost of £2330 0s 0d for a Double prefabricated classroom block, toilets for teacher, girls and boys, and some paving between school and latrines. The request was marked urgent.
- Letter dated 09 March 1951 referenced a school to be established and Works Department to prepare a suitable site.
- Letter dated 17 May 1951 regarding tender and cost increased for drainage etc. by Messrs A R Morgan Ltd
- Expenditure sheet stamped 21 March 1951 reads NECESSITY - The Ministry of Works Camps is 2½ miles from the Mangaroa School. In 1950, 31 Camp children of school age attended the school being conveyed by the Works Department free of charge. Children other than Camp children attending Mangaroa School amount to 26. The estimate number of children at the Camp this year is 80. Although the Camp is unlikely to be a permanent settlement it is expected to continue in existence until the anticipated completion of the tunnel project at the end of 1954. Existing accommodation at Mangaroa School is insufficient for such numbers and the Ministry of Works cannot continue indefinitely to arrange conveyance for these children. In the circumstances the establishment of a temporary school of two rooms is an immediate necessity. Should further increases warrant additional accommodation at the Camp, it is proposed to remove and re-erect the prefabricated classroom recently provided at the
- Application dated 22 May 1951 details final payment of special grant for buildings of Maymorn School. Please note the application form and the file does not record when Maymorn School was completed. I believe the pupils started to attend school after the May holidays in 1951.
- Letter dated 14 December 1951 details information about major drainage problems with the school site. The children have been forced to play on a very small area of paving. The football field is too rough for organised games. The court area is unsealed and holds much surface water after rain. The unpaved ground around the school building is in a very rough state and is entirely unsatisfactory for a school of this grading.
- Letter dated 04 February 1952
- Letter dated 10 August 1953 from Education Board to Mr J Huxton secretary of Maymorn School details that Mr D Hillary who has his own home in Silverstream was appointed to the position as head teacher of Maymorn School in the third term.
- Letter dated 17 January 1955 details that the housing accommodation at the Mangaroa Camp now controlled by the Ministry of Works will be taken over in due course by the Railways Department and will be occupied by married employees of the Way and Works Branch. This intimation is sent you in order that you might be aware of the fact that a number of children will still be residing in the area and that there will be need for a primary school now being operated there
- Application sheet dated 27 November 1959 details that this school was established in a prefabricated building to serve pupils of families living at Maymorn during the construction of the Rimutaka tunnel. These people have left but the houses are still occupied to the extent that the roll had been maintained at two teacher status. It is considered that a permanent school should be built. (please note that the new school built was Plateau not Maymorn)
- Letter dated 22 November 1967 stated that the school would close on 15 December 1967 and pupils would be transferred to the new Plateau School and the prefabricated classroom block to Taita Intermediate.

- Letter dated 22 December 1967 was a reply to the Te Marua – Mangaroa Play Centre explaining that the old Maymorn School could not be used as a play centre as the building was required for another Education Board location. (Please note that the land was owned by the Works Department and only the school buildings were owned by the Education Department)

(Reference Archives NZ Wellington Office R20132310 date 1950-1967 Primary Schools Wellington Maymorn box 130 part number 1 record number 7/6 Department of Education Central Regional Office Residual Management Unit 1950-1967 former ABFI accession W354

Archives New Zealand Wellington Office – 1950-1968

Correspondence covering the proposal of the Maymorn School for the children of men working on the Rimutaka Deviation / Tunnel.

- 06 November 1950 – Education facilities for children at Ministry of Works Camp at Maymorn / Mangaroa. At time 31 Camp children attended Mangaroa School which was situated 2½ miles from camp. The number of children was expected to increase to 80 the following year so a proposal was made to open a temporary school for the children of the Maymorn camp
- 26 February 1951 A Railway bus started to carry the children to Mangaroa School. Before this the Works Department shouldered the responsibility of transporting the children which took men away from their work. They stated the number of children attending the school would be 42 within three months. They were continuing to build housing in the camp and when they became available for families the school roll would increase. The proposed Maymorn School would be erected before the beginning of the next term.
- 30 March 1951 Grant of £2,330 for two prefabricated classrooms and lavatory accommodation at the Ministry of Works Camp at Mangaroa. Request to obtain permit from the district building controller before allowing work to commence.
- 30 August 1966 Asking if the site of Maymorn School was still in the Ministry of Works control or was it transferred to the Railways Department when the housing accommodation was taken over by that department after the completion of the Tunnel.
- 08 September 1966 Site still in the ownership of Ministry of Works
- 15 August 1967 Board meeting memo regarding closure of Maymorn School. The railways had by now removed all but 12 of the cottages in the Camp and the school roll had fallen from 64 in 1964 to 31 today.
- 19 September 1967 Report that Maymorn School be closed as from the end of the present school year
- 13 November 1967 Report on the School being closed and buildings transferred to Taita Intermediate etc. and children to be attend the new Plateau School
- 12 March 1968 Plateau School Head Teacher Leo Stafford Bush to Education Board requesting disposal of Maymorn School equipment that had been transfer to Plateau School and was now useless. A typed list of 53 items were attached to the letter

NOTE Item 28 listed **Attendance Register - Admission Register** - Records of Surveys

(Reference Archives NZ Wellington office R21564509 date 1950-1968 Closed School Files Maymorn Accommodation box 432 part number 1 record number 2/415 Wellington Education Board Residual Management Unit former agency ABDM accession W3569)

Archives New Zealand Wellington Office – 1951-1954

School Buildings and Sites Maymorn (Mangaroa Camp) Temporary School Wellington district card

Front of Card One = Wood building material – 1951 Year of Erection – 2/1034 Original – E/D Prefab Additions – 2/1034 Total available

Back of Card One = Purpose of Grant / Application grant – Amount granted 30 May 1951 / Amount £265.10s.0p. - Cost date 23 January 1953 / Amount £947 – General remarks Grant £2330 cancelled except latrines £682.10.0.

Purpose of Grant / Temp School – Amount granted date 18 March 1951 Amount 2330.0.0. – Cost (same as above) date 23 January 1953 / Amount £947– General remarks Grant £2330 cancelled except latrines £682.10.0.

Purpose of Grant Prefab Furniture – Amount Granted date 31 May 1951 / Amount £432.0.0.

Purpose of Grant Ground works – Amount Granted date 13 June 1952 / Amount £175.0.0.

Purpose of Grant A/G to £2595.10.0. Prefabs date 05 March 1954 / Amount £198.0.11. –
Cost date 2081 09 March 1954 / Amount £198.0.11.

(Reference Archives NZ Wellington office R84687 date 1951-1954 School Buildings and Sites Education District Wellington and Marlborough Maymorn School [see Mangaroa Camp School] box 1 Former AAQD series 23834 accession W3368 Department of Education Central Regional Office)

Archives New Zealand Wellington Office - 1963-1967

The Wellington Education Board wanted to purchase land owned by the Wellington Sun and Health Society for the proposed building of the new Plateau School. It was proposed that Maymorn School would be closed and the children transferred to the new Plateau School.

The 12 March 1964 legal description of the land was Pt. Lot 4 D.P. 18609 being part of sections 111 & 181 Hutt district, measurements 7.5 chains x 1.4 chains approx. 1 acre. A plan showing the proposed site for Plateau School was situated at the end of Malloy's road off Plateau at Te Marua and marked 18609, D.P. 13776 T.P. 13476. The acquisition of this land was required for the proposed school as the additional area was steep hillside and unsuitable for playing fields or a building site. The Wellington Sun & Health Society turned down the offer for their land resulting in a Ministerial requirement been placed on the land.

A letter dated 22 November 1967 from the Department of Education to the Ministry of Works stated that Maymorn School would be closing on 15 December 1967 and the children transferred to the new Plateau School. The prefabricated classroom block at Maymorn would be moved to Taita Intermediate soon after the closing of the school. The toilet block would also be moved as soon as possible. The Department of Education thanked the Ministry of Works department for the use of the Maymorn school site.

(Reference Archives NZ Wellington Office R20450084 date 1963-1967 Schools Wellington Proposed Occupation Centre Maymorn School Site Upper Hutt claim (Wellington Sun Club) box 35 record number 13/1/158/0/2 Ministry of Works and Developments Residual Management Unit Head Office former AATE accession W3399)

Archives New Zealand Wellington Office – no date

Mangaroa Camp Wellington now Maymorn – There are no other details written on this card

(Reference Archives NZ Wellington Office R84670 date unknown School Buildings and Sites Education District Wellington and Marlborough Mangaroa Camp School [now Maymorn School] box 1 former AAQD series 23834 accession W3368)

Maymorn School pupils – 1950 to 1955

Maymorn School was opened at the end of December 1950 so there was no 1950 classification list for Maymorn School. Before 1950 the Maymorn Camp children attended Mangaroa School which was situated further down the valley. I have transcribed the 1950 Mangaroa School classification list where the children from the Maymorn Camp are recorded.

1950 December 15 Classification list Class Schedules – head teacher W R Benton Mangaroa School – 59 children (1949 list - 31 children)

(Reference Archives New Zealand Wellington ABDM W3569 box 595 Classification list Class Schedules 1950 Maymorn School)

1951 Classification list Class Schedules – head teacher Barnes Maymorn School – 29 children

(Reference Archives New Zealand Wellington ABDM W3569 box 595 Classification list Class Schedules 1951 Maymorn School)

1952 December 18 Classification list Class Schedules – head teacher Barnes Maymorn School – 44 children

(Reference Archives New Zealand Wellington ABDM W3569 box 595 Classification list Class Schedules 1952 Maymorn School)

1953 December 17-21 Classification list Class Schedules – head teacher D F A Hillary Maymorn School – 60 children

(Reference Archives New Zealand Wellington ABDM W3569 box 596 Classification list Class Schedules 1953 Maymorn School)

1954 December 16-20 Classification list Class Schedules – head teacher D F A Hillary Maymorn School – 56 children

(Reference Archives New Zealand Wellington ABDM W3569 box 596 Classification list Class Schedules 1954 Maymorn School)

1955 December 16-20 Classification list Class Schedules – head teacher [W M Clough sic very hard to read] Maymorn School -39 children

(Reference Archives New Zealand Wellington ABDM W3569 box 596 Classification list Class Schedules 1955 Maymorn School)

Please note that from 1955 onwards there are no classification lists available at Archives New Zealand as they are still with the Education department and have not been transferred to Wellington Archives New Zealand.

<i>Surname</i>	<i>Full name</i>	<i>Age</i>	<i>Total schooling</i>	<i>Present class</i>	<i>New class</i>	<i>Year</i>
Adair	Robin Adair	9/11	4/6	S2	S3	1953
Adair	Robin Adair	10/11	5/6	S3	S4	1954
Adair	Trevor Adair	6/9	1/9	Ps	P4	1953
Adair	Trevor Adair	7/9	2/9	P4	S1	1954
Ancell	Jill Ancell	7/6	2/6	S1	S2	1950
Arthur	Marcia Arthur	7/3	2/1	P4	S1	1955
Ashworth	Beverly Ashworth	5/7	0/7	P	P	1953
Ashworth	Beverly Ashworth	6/7	1/7	P2	P3	1954
Ashworth	Beverley Ashworth	7/8	2/7	P4	S1	1955
Ashworth	Colin Ashworth	8/3	3/3	S1	S2	1952
Ashworth	Colin Ashworth	9/2	4/2	S2	S3	1953

Ashworth	Colin Ashworth	10/2	5/2	S3	S4	1954
Ashworth	Colin Ashworth	11/3	6/3	S4	F1	1955
Ashworth	Maree Ashworth	5/9	0/11	P2	P3	1955
Ashworth	Trevor Ashworth	6/2	1/2	P	P	1952
Ashworth	Trevor Ashworth	7/1	2/1	P3	P4	1953
Ashworth	Trevor Ashworth	8/1	3/1	S1	S2	1954
Ashworth	Trevor Ashworth	9/2	4/2	S2	S3	1955
Ashworth	Valerie Ashworth	10/5	5/5	S3	S4	1952
Ashworth	Valarie Ashworth	11/4	6/4	S4	F1	1953
Ashworth	Valerie Ashworth	12/4	7/4	F1	F2	1954
Ashworth	Valerie Ashworth	13/5	8/5	F2	F3	1955
Benge	June Benge	5/6	0/6	P1	P1	1950
Benge	Leslie Benge	7/9	2/9	S1	S2 promoted on trial	1950
Benge	Susan Benge	5/8	0/8	P1	P2	1955
Benner	Phyllis Benner	10/3	5/3	S3	S3 failed from USA 1.10.1951 not up to standard required	1951
Benner	Phyllis Bennie	11/3	6/3	S3	S4	1952
Brown	Anthony Brown	7/1	1/10	P4	S1	1954
Brown	Anthony/Tony Brown	8/1	2/10	S1	S2	1955
Brown	Len Brown	8/4	3/3	S1	S2	1954
Brown	Len Brown	9/4	4/3	S2	S3	1955
Brown	Mary Brown	13/3	8/0	F2	F3	1954
Brown	Maureen Brown	10/3	5/3	S3	S4	1954
Brown	Maureen Brown	11/3	6/3	S4	F1	1955
Brown	Peter Brown	5/3	0/3	P1	P2	1954
Brown	Peter Brown	6/7	1/3	P3	P4	1955
Brown	Robert Brown	11/9	6/9	S4	F1	1954
Brown	Robert Brown	12/9	7/9	F1	F2	1955
Burrell	Russell Burrell	5/10	0/10	P2	P3	1950
Campbell	Cheryl Campbell	5/2	0/2	P	P	1953
Campbell	Dennis Campbell	5/11	0/11	P1	P2	1953
Campbell	Dennis Campbell	6/11	1/11	P1	P2	1954
Campbell	Dennis Campbell	7/6	2/5	P3	P4	1955
Campbell	Geneva Campbell	9/3	4/3	S1	S2 promoted on trail	1950
Campbell	Geneva Campbell	10/3	5/3	S2	S3	1951
Campbell	Geneva Campbell	11/3	6/3	S3	S4	1952
Campbell	Geneva Campbell	12/2	7/1	S4	F1	1953

Campbell	Geneva Campbell	13/2	8/1	F1	F2	1954
Campbell	Geneva Campbell	14/3	9/2	F2	F3	1955
Campbell	Janet Campbell	7/9	2/9	P4	S1	1953
Campbell	Leonard Campbell	6/6	1/6	P2	P3	1950
Campbell	Leonard Campbell	8/6	2/2	P	S1	1951
Campbell	Len Campbell	8/6	3/6	S1	S2	1952
Campbell	Len Campbell	9/5	4/1	S2	S3	1953
Campbell	Len Campbell	11/0	6/0	S3	S4	1954
Campbell	Len Campbell	11/6	6/2	S4	F1	1955
Campbell	Ned Campbell	5/11	0/10	P	P	1952
Campbell	Ned Campbell	6/10	1/11	P3	P4	1953
Campbell	Ned Campbell	7/10	2/11	P4	S1	1954
Campbell	Ned Campbell	8/10	3/10	S1	S2	1955
Campbell	Peter Campbell	11/8	6/8	S2	S3 promoted re age	1950
Campbell	Peter Campbell	12/8	7/8	S3	S4	1951
Campbell	Peter Campbell	13/8	8/8	S4	F1	1952
Campbell	Peter Campbell	14/7	9/7	F1	F2	1953
Campbell	Peter Campbell	15/7	10/7	F2	F3	1954
Campbell	Reina Campbell	5/8	0/8	P1	P2	1955
Campbell	Robert Campbell	6/6	1/6	P3	P4	1953
Campbell	Rossanna Campbell	7/9	2/9	P4	S1	1950
Campbell	Rossanna Campbell	8/9	2/10	S1	S2	1951
Campbell	Rosanna Campbell	9/9	4/10	S2	S3	1952
Campbell	Rosanna Campbell	10/8	4/9	S3	S4	1953
Campbell	Rosanna Campbell	11/8	5/9	S4	F1	1954
Campbell	Rosie Campbell	12/9	6/10	F1	F2	1955
Carroll	Frederick Carroll	12/4	7/4	F1	F2	1950
Carroll	Lillian Carroll	6/6	1/6	P2	P3	1955
Carroll	Michael Carroll	9/3	3/10	S1	S2	1955
Carroll	Ngairé Carroll	9/7	4/7	S2	S3	1950
Carroll	Patricia Carroll	8/0	2/10	P4	S1	1955
Connelly	Eleanore Connelly	12/10	7/10		From USA 26.11.1951	1951
Connolly	Madeline Connolly	7/0	1/7	P	P	1952
Cooper	Gary Cooper	11/2	6/2	S3	S4	1950
Cooper	Ian Cooper	9/3	4/3	S2	S3	1950
Cowden	Colin Cowden	8/7	3/7	S1	S1 held back	1950
Cowden	Colin Cowden	9/7	4/7	S1	S2	1951

Cowden	Colin Cowden	10/7	5/7	S2	S3	1952
Cowden	Colin Cowden	11/6	6/6	S3	S4	1953
Cowden	Colin Cowden	12/6	7/6	S4	F1	1954
Cowden	Pamela Cowden	8/7	3/7	S1	S2	1950
Cowden	Pamela Cowden	9/7	4/7	S2	S3	1951
Cowden	Pamela Cowden	10/7	5/7	S3	S4	1952
Cowden	Pamela Cowden	11/6	6/6	S4	F1	1953
Cowden	Pamela Cowden	12/6	7/6	F1	F2	1954
Cowden	Valerie Cowden	12/9	7/9	F1	F2	1950
Cowden	Valerie Cowden	13/9	8/9	F2	F3	1951
Cullen	Anthony Cullen	9/1	4/1	S1	S2	1952
Cullen	Anthony Cullen	10/0	5/0	S2	S3	1953
Cullen	Maureen Cullen	10/9	5/9	S3	S4	1952
Cullen	Maureen Cullen	11/8	6/8	S4	F1	1953
Cullen	Maureen Cullen	12/8	7/8	F1	F2	1954
Davson	Colin Davson	8/9	3/9	S1	S2	1951
Davson	Colin Davson	9/10	4/10	S2	S3	1952
Davson	Garth Davson	7/0	1/11	P	S1	1951
Davson	Garth Davson	8/6	3/6	S1	S2	1952
Davson	Lloyd Davson	6/11	1/11	P	P	1952
Dawson	Graeme Dawson	6/6	1/6	P4	S1	1950
Debney	Anne Debney	9/8	4/8	S3	F1	1950
Debney	Della Debney	5/1	0/1	P1	P1	1950
Debney	John E Debney	14/4	9/4	F2	F3	1950
Debney	Dennis Debney	12/7	7/7	F1	F2	1950
Debney	Peter Debney	7/3	2/3	P4	S1	1950
Duncan	Beth Duncan	5/8	0/8	P2	P3	1950
Finnie	Anne Finnie	7/9	2/8	P4	S1	1954
French	Christopher French	6/7	1/7	P4	S1	1950
Gallagher	Peter Gallagher	10/0	5/0	S3	S4	1950
Gallagher	Peter Gallagher	11/0	5/11	S3	S4	1951
Gallagher	Peter Gallagher	12/0	6/11	S4	F1	1952
Gallagher	Peter Gallagher	12/11	7/9	F1	F2	1953
Gallagher	Peter Gallagher	13/11	8/9	F2	F3	1954
Gallagher	Ross Gallagher	11/2	6/2	S3	S4	1950
Gallagher	Ross Gallagher	12/2	7/2	S4	F1	1951
Gallagher	Ross Gallagher	13/2	8/2	F1	F2	1952

Gallagher	Ross Gallagher	14/6	9/1	F11	F3	1953
Gorrie	Cynthia Gorrie	9/1	4/1	S2	S3	1950
Gorrie	Lynette Gorrie	5/1	0/1	P1	P1	1950
Gorrie	William Gorrie	11/0	6/00	S4	F1	1950
Griffin	George Griffin	10/2	4/10	S2	S3	1951
Griffin	George Griffin	11/2	5/11	S3	S4	1952
Griffin	George Griffin	12/1	6/9	S4	F1	1953
Griffin	George Griffin	13/1	7/9	F1	F2	1954
Griffin	George Griffin	14/2	8/10	F2	F3	1955
Griffin	Isabel Griffin	13/6	1	F1	F2	1951
Griffin	Isabel Griffin	14/6	8/4	F2	F3	1952
Griffin	Murray Griffin	12/7	7/7	S4	F1	1951
Griffin	Murray Griffin	13/7	8/5	F1	F2	1952
Griffin	Murray Griffin	14/7	9/3	F22	F3	1953
Griffin	Roderick Griffin	11/7	5/7	S3	S4	1951
Griffin	Roderick Griffin	12/7	6/7	S4	F1	1952
Griffin	Roderick Griffin	13/6	7/6	F1	F2	1953
Griffin	Roderick Griffin	14/6	8/6	F2	F3	1954
Hanson	Bruce Hanson	8/9	3/9	S1	S2 promoted on trial	1950
Hati	Loma Hati	5/7	0/7	P1	P2	1954
Hati	Loma Hati	6/7	1/7	P3	P4	1955
Haxton	Catherine Haxton	5/2	0/2	P	P	1953
Haxton	Catherine Haxton	6/2	½	P2	P3	1954
Haxton	John Haxton	5/0	0	P	S1	1951
Haxton	John Haxton	6/4	¼	P2	P3	1950
Haxton	John Haxton	8/4	¾	S1	S2	1952
Haxton	John Haxton	9/3	4/3	S2	S3	1953
Haxton	John Haxton	10/3	5/3	S3	S4	1954
Haxton	Susan Haxton	6/8	1/8	P	S1	1952
Haxton	Susan Haxton	7/7	2/7	S1	S2	1953
Haxton	Susan Haxton	8/7	3/7	S2	S3	1954
Holtham	Colin Holtham	12/7	7/7	S4	F1	1950
Holtham	David Holtham	9/4	4/4	S1	S1 held back	1950
Howard	Mary Howard	12/5	7/5	F1	F2	1950
Jackson	Lynne Jackson	5/10	0/10	P1	P2	1954
Jackson	Spencer Jackson	5/11	0/11	P2	P3	1953
Jekielek	Mariane Jekielek	11/1	2/0	S2	S3 (from Germany 1954)	1955

Jennings	Bruce Jennings	8/8	3/8	S1	S2	1950
Jennings	Bruce Jennings	9/8	4/8	S2	S3	1951
Jennings	Bruce Jennings	10/8	5/8	S3	S4	1952
Jennings	Bruce Jennings	11/7	6/6	S4	F1	1953
Jennings	Bruce Jennings	12/7	7/6	F1	F2	1954
Jennings	Janice Jennings	6/7	1/7	P4	S1	1950
Jennings	Leonie Jennings	11/8	6/8	S4	F1	1950
Jennings	Leonie Jennings	12/8	7/8	F1	F2	1951
Jones	Gregory Jones	7/9	2/3	P	S1	1952
Jones	Gregory Jones	8/8	3/2	S1	S2	1953
Jones	Gregory Jones	9/8	4/2	S2	S3	1954
Knox	Gail Knox	8/5	3/3	S1	S2	1951
Knox	Gail Knox	9/5	4/3	S2	S3	1952
Knox	Gail Knox	10/4	5/2	S3	S4	1953
Knox	Gail Knox	11/4	6/2	S4	F1	1954
Knox	Gail Knox	12/5	7/3	F1	F2	1955
Kremmer	Gary Kremmer	12/4	7/3	F1	F2	1951
Kremmer	Gary Kremmer	13/4	8/4	F2	F3	1952
Lessels	Jeanette Lessels	9/9	4/7	S2	S3	1955
Lessels	Lynley Lessels	7/7	2/7	P4	S1	1955
Lessels	Maurice Lessels	12/3	7/6	F1	F2	1955
Lund	Gaylyn Lund	8/1	2/1	P	S1 on trial	1951
Lund	Gaylyn Lund	8/0	2/11	S1	S2	1952
Lund	Gaylyn Lund	8/11	3/9	S2	S3	1953
Lund	Gaylyn Lund	9/11	4/9	S3	S4	1954
McAllister	Karen McAllister	6/4	¼	P	P	1952
McGoldrick	Barry McGoldrick	12/10	6/9	S4	F1	1954
McGoldrick	Barry McGoldrick	13/10	7/9	F1	F2	1955
McGoldrick	Linda McGoldrick	5/8	0/9	P1	P2	1955
McLaren	Alan McLaren	?	?	P1	P2	1953
McLaren	Colin McLaren	11/4	6/4	S3	S4	1953
McLaren	Donald McLaren	9/11	4/9	S2	S3	1953
McLaren	Yvonne McLaren	12/7	7/7	F1	F2	1953
Maher	Christine Maher	6/4	1/4	P2	P3	1950
Maher	Yvonne Maher	12/10	7/10	F1	F2	1950
Mann	Marshall Mann	6/6	1/6	P	P	1952
Mann	Marshall Mann	7/5	2/5	P4	S1	1953

Mann	Marshall Mann	8/5	3/5	S1	S2	1954
Mann	Marshall Mann	9/6	4/6	S2	S3	1955
Mann	Noeline Mann	12/3	7/3	F2	F3	1950
Martin	Robin Martin	8/0	3/0	P4	S1	1950
Matenga	Lena Matenga	5/7	0/7	P1	P2	1954
Matenga	Peter Matenga	5/11	0/11	P1	P2	1953
Matenga	Peter Matenga	6/11	1/11	P2	P3	1954
Melton	Marjorie Melton	5/5	0/3	P1	P2	1954
Miro	Laurence Miro	9/7	4/7	S2	S3	1950
Miro	Warren Miro	6/3	1/3	P2	P3	1950
Morgan	James Morgan	12/1	7/1	F1	F2	1950
Morgan	James Morgan	13/0	7/10	F2	F3	1951
Morgan	Julie Morgan	9/10	4/9	S3	S4	1953
Mundy	Eileen Mundy	7/4	1/10	P3	P4	1954
Mundy	Eileen Mundy	8/4	2/10	S1	S2	1955
Mundy	John Mundy	14/4	8/10	F1	F2	1954
Mundy	Stalin Mundy	9/2	4/2	S2	S3	1954
Mundy	Stalin Mundy	11/2	6/1	S3	S4	1955
Nahkies	Jennifer Nahkies	11/11	6/0	F1	F2	1955
Nylund	Carl Nylund / Nyland	10/9	5/9	S4	F1	1950
Nylund	Carl Nylund / Nyland	11/9	6/9	F1	F2	1951
Nylund	Carl Nylund / Nyland	12/9	7/9	F2	F3	1952
O'Riley	Shona O'Riley	5/5	0/4	P1	P2	1954
Parker	Charles Parker	5/7	0/7	P1	P2	1953
Parker	Jill Parker	10/6	5/6	S3	S4	1950
Parker	Jill Parker	11/6	6/6	S4	F1	1951
Parker	Jill Parker	12/6	7/6	F1	F2	1952
Parker	Jill Parker	13/5	8/5	F2	F3	1953
Pedersen	Fay Pedersen	6/9	1/5	P	S1	1952
Pedersen	Fay Pedersen	7/8	2/9	S1	S2	1953
Pedersen	Fay Pedersen	8/8	3/9	S2	S3	1954
Pedersen	Jean Pedersen	10/2	5/2	S3	S4	1950
Pedersen	Jean Pedersen	11/1	6/1	S4	F1	1951
Pedersen	Jean Pedersen	12/1	7/1	F1	F2	1952
Pedersen	Jean Pedersen	13/0	8/0	F2	F3	1953
Pedersen	Lionel Pedersen	5/10	0/10	P1	P2	1954
Pickford	Glenys Pickford	10/11	5/11	S4	F1	1950

Pope	Raelene Pope	6/2	1/2	P	P	1953
Pope	Raelene Pope	7/2	2/2	P3	P4	1954
Prout	Jill Prout	7/9	2/9	S1	S2	1950
Quinnell	Warren Quinnell	9/8	4/8	S2	S3	1955
Quinnell	Rodney Quinnell	7/7	/10	P4	S1	1955
Richards	Anthony Richards	6/7	1/7	P	P	1952
Richards	Anthony Richards	7/6	2/6	P4	S1	1953
Richards	Anthony Richards	8/6	3/6	S1	S2	1954
Rickard	Michael Rickard	9/3	4/3	S3	S4	1950
Ropitini	Paul Ropitini / Ropotini	6/4	1/4	P	P	1952
Ropitini	Paul Ropitini	7/3	2/3	P4	S1	1953
Ropitini	Paul Ropitini	8/3	3/3	S1	S2	1954
Scholes	Anthea Scholes	7/2	2/2	P4	S1	1950
Scholes	Murray Scholes	10/	5/0	S3	S4	1950
Spain	Doreen Spain	9/8	4/8	S3	S4	1953
Spain	Eileen Spain	14/4	9/4	F2	F3	1953
Spain	Judith Spain	11/6	6/6	S4	F1	1953
Spain	Olive (Pat) Spain	12/4	7/9	S4	F1	1953
Spain	Robert Spain	6/3	1/3	P2	P3	1953
Spain	Thomas Spain	8/6	3/6	S1	S2	1953
Stephen	Richard Stephen	12/1	6/1	S4	F1	1951
Stephen	Richard Stephen	13/3	8/3	F1	F2	1952
Stephen	Richard Stephen	14/3	9/2	F2	F3	1953
Stephen	Michael Stephen	5/9	0/9	P2	P3	1953
Stephen	Michael Stephen	6/9	1/9	P3	P4	1954
Stephen	Michael Stephen	7/10	2/10	S1	S2	1955
Swan	Lorrain Swan	5/9	0/9	P	P	1952
Swan	Lorraine Swan	6/8	1/8	P3	P4	1953
Swan	Loraine Swan	7/8	2/8	P4	S1	1954
Swannell	Ellen Swannell	9/3	4/2	S1	S2	1953
Swannell	Erin Swannell	7/2	2/2	P4	S1	1953
Swannell	Gayle Swannell	5/7	0/4	P	P	1953
Swensson	Anne Swensson	9/11	4/11	S3	S4	1950
Swensson	Anne Swensson	12/0	6/11	F1	F2	1952
Swensson	Anne Swensson	12/10	7/9	F2	F3	1953
Te Tau	Arthur Te Tau	9/1	3/11	S2	S3 on trial	1952
Torrey	Margaret Torrey	9/10	4/10	S3	S4	1951

Torrey	Margaret Torrey	10/10	5/10	S4	F1	1952
Whiteman	Allan Whiteman	6/3	1/3	P2	P3	1950
Whiteman	Dulcie Whiteman	12/4	7/4	F1	F2	1950
Whiteman	Glenys Whiteman	8/8	3/8	S2	S3	1950
Whiteman	Karin Whiteman	9/6	4/6	S2	S3	1950
Whiteman	Keith Whiteman	7/9	2/10	S1	S2	1955
Whiteman	Lynda Whiteman	13/4	8/4	F2	F3	1950
Whiteman	Malcolm Whiteman	14/2	9/2	F2	F3	1950
Whiteman	Mavis Whiteman	9/11	4/11	S3	S4	1950
Wills	Edith Wills	11/4	5/10	S4	F1	1954
Wills	Helen Wills	10/5	5/3	S3	S4	1954
Wills	Kathleen Wills	6/2	1/2	P1	P2	1954
Wills	Tui Wills	9/3	4/1	S2	S3	1954
Wilson	Brian Wilson	7/6	2/3	P3	P4	1954
Wilson	Trevor Wilson	14/3	8/3	F2	F3	1954
Winton	Lyndsay Winton	12/2	7/0	F1	F2	1955
Woods	Janice Woods	?	?	P	P	1952
Woods	Janice Woods	6/8	1/8	P2	P3	1953